

CASE STUDY

TG ELECTRICAL PANEL RETROFIT

Ensurge Energy Solutions (Formerly GSM Heat & Power Solutions) was approached by M/s Bhagirathi Nirman Private Limited to assist in Re-Erection and Re-commissioning of their 20MW BHEL TG Set.

Site Details:

M/s Bhagirathi Nirman Private Limited (BNPL), Sambalpur, Orissa.

Background:

M/s BNPL had acquired a shutdown plant M/s Rathi Steel and Power Ltd around June 2019. M/s Rathi steel had shut operations in the year 2012 and has been in shut down condition ever since. Most of the Item in the steel plant were missing including few items in 20MW BHEL TG set. Many cables, internal wiring in the panels were cut or missing. Even the drawings of the TG including electrical panels were not found.

We were issued work order to perform Re-erection and Re-commissioning of E&I part of 20MW TG set. We deputed a team to site along with necessary tools and completed interconnection & revamping all panel internals. Necessary Pre-commissioning and Relay Testing were completed satisfactorily.

Although other vendors insisted for complete replacement of panels citing non availability of drawing and major damages in internal wiring of panels, we utilized our expertise and salvaged most items and the panel structure (Except AVR) thus saving considerable cost to customer.

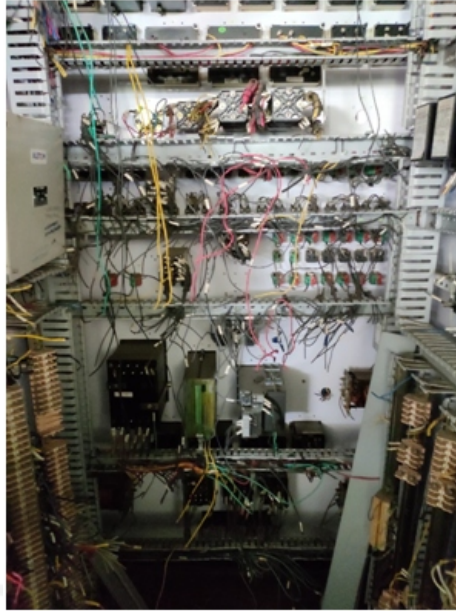
20MW Turbine Generator



Metering and Synchronizing Panel



Front



View Before

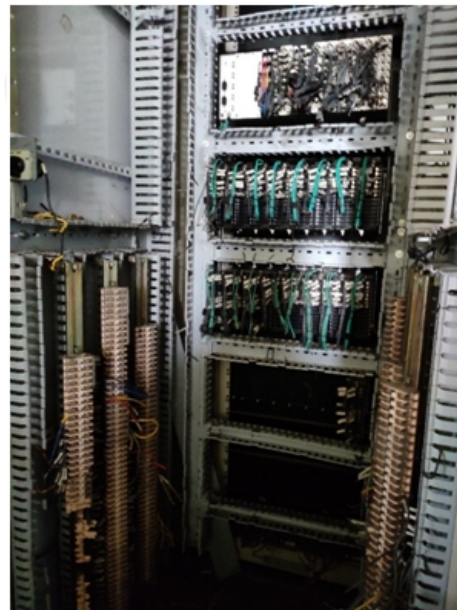


After

Generator Relay Panel.



Front



View Before



After

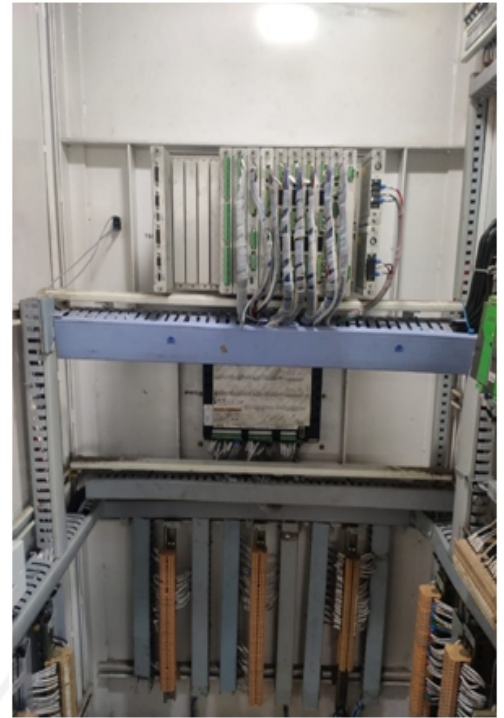
Turbine Control Panel.



Front



View Before

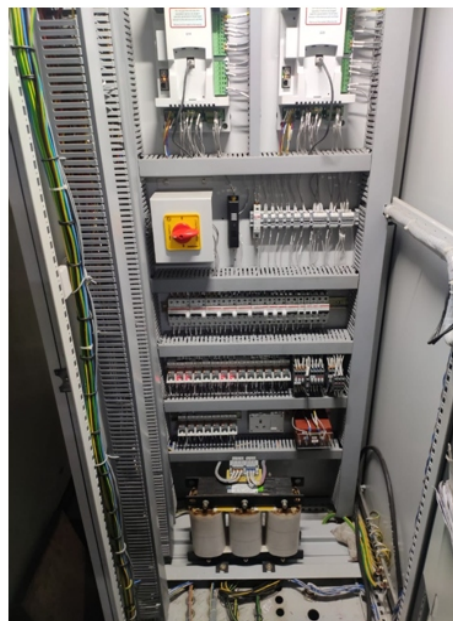


After

AVR Panel



After



BHEL AVR Panel was replaced with ABB dual channel Unitrol 1020 panel. Complete specification, sizing and selection, Drawing approval, Inspection and Commissioning of panel at site was carried out by M/s GSM without any additional charges to Customer.

Commissioning



Photo: Taken after successful commissioning of the TG set. TG set was synchronized and loaded on the very first attempt without tripping of any kind. Smooth successful commissioning a result of through pre-commissioning with our expertise.

For further information or enquiries please contact us on

satish@ensurge.in | +91-9620407654 • santosh@ensurge.in | +91-9663559812 • manjunath@ensurge.in | +91-9731134254

EES 
Ensurge Energy Solutions

9, 'Santhrupthi', Nanjappa Layout,
Yelchenahalli, Bengaluru - 560 062.

www.ensurgesolutions.com

- CONSULTING
- ENGINEERING
- PROJECT MANAGEMENT
- OPERATIONAL SUPPORT